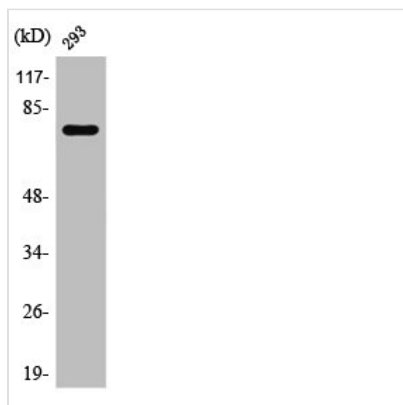




MAPT Antibody

Product Code	CSB-PA004234
Storage	Upon receipt, store at -20°C or -80°C. Avoid repeated freeze.
Uniprot No.	P10636
Immunogen	Synthesized peptide derived from Human Tau around the non-phosphorylation site of T181.
Raised In	Rabbit
Species Reactivity	Human
Tested Applications	WB, ELISA; WB:1:500-1:2000, ELISA:1:20000
Form	Liquid
Conjugate	Non-conjugated
Storage Buffer	Liquid in PBS containing 50% glycerol, 0.5% BSA and 0.02% sodium azide.
Purification Method	The antibody was affinity-purified from rabbit antiserum by affinity-chromatography using epitope-specific immunogen.
Isotype	IgG
Alias	MAPT; MAPTL; MTBT1; TAU; Microtubule-associated protein tau; Neurofibrillary tangle protein; Paired helical filament-tau; PHF-tau
Immunogen Species	Homo sapiens (Human)
Target Names	MAPT

Image



Western Blot analysis of HepG2 cells using Tau Polyclonal Antibody

Usage For Research Use Only. Not for use in diagnostic or therapeutic procedures.