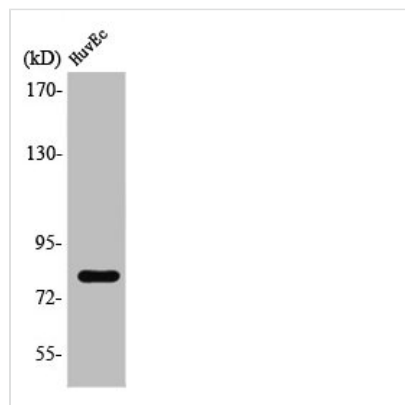




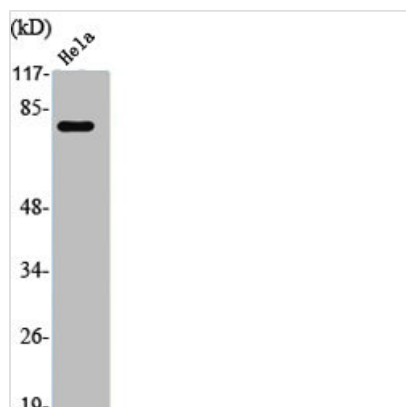
MAPT Antibody

Product Code	CSB-PA004235
Storage	Upon receipt, store at -20°C or -80°C. Avoid repeated freeze.
Uniprot No.	P10636
Immunogen	Synthesized peptide derived from Human Tau around the non-phosphorylation site of S235.
Raised In	Rabbit
Species Reactivity	Human,Mouse,Rat,Monkey
Tested Applications	WB, ELISA; WB:1:500-1:2000, ELISA:1:20000
Form	Liquid
Conjugate	Non-conjugated
Storage Buffer	Liquid in PBS containing 50% glycerol, 0.5% BSA and 0.02% sodium azide.
Purification Method	The antibody was affinity-purified from rabbit antiserum by affinity-chromatography using epitope-specific immunogen.
Isotype	IgG
Alias	MAPT; MAPTL; MTBT1; TAU; Microtubule-associated protein tau; Neurofibrillary tangle protein; Paired helical filament-tau; PHF-tau
Immunogen Species	Homo sapiens (Human)
Target Names	MAPT

Image



Western Blot analysis of HuvEc cells using Tau Polyclonal Antibody



Western Blot analysis of HELA cells using Tau Polyclonal Antibody