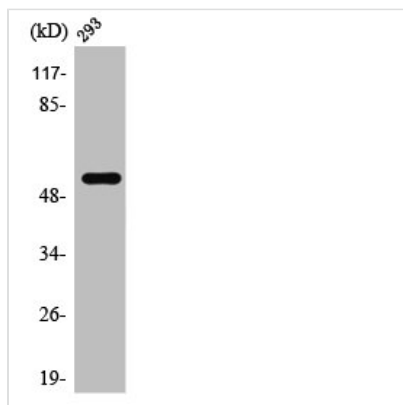




SERINC3 Antibody

Product Code	CSB-PA004252
Storage	Upon receipt, store at -20°C or -80°C. Avoid repeated freeze.
Uniprot No.	Q13530
Immunogen	Synthesized peptide derived from the C-terminal region of Human TDE1.
Raised In	Rabbit
Species Reactivity	Human,Mouse,Rat
Tested Applications	WB, IHC, IF, ELISA; WB:1:500-1:2000, IHC:1:100-1:300, IF:1:200-1:1000, ELISA:1:20000
Form	Liquid
Conjugate	Non-conjugated
Storage Buffer	Liquid in PBS containing 50% glycerol, 0.5% BSA and 0.02% sodium azide.
Purification Method	The antibody was affinity-purified from rabbit antiserum by affinity-chromatography using epitope-specific immunogen.
Isotype	IgG
Alias	SERINC3; DIFF33; TDE1; SBBI99; Serine incorporator 3; Tumor differentially expressed protein 1
Immunogen Species	Homo sapiens (Human)
Target Names	SERINC3

Image



Western Blot analysis of 293 cells using TDE1 Polyclonal Antibody

Usage

For Research Use Only. Not for use in diagnostic or therapeutic procedures.