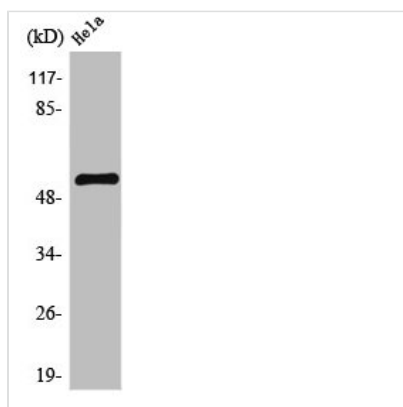




ETV6 Antibody

| | |
|----------------------------|---|
| Product Code | CSB-PA004256 |
| Storage | Upon receipt, store at -20°C or -80°C. Avoid repeated freeze. |
| Uniprot No. | P41212 |
| Immunogen | Synthesized peptide derived from the C-terminal region of Human TEL. |
| Raised In | Rabbit |
| Species Reactivity | Human, Mouse, Rat |
| Tested Applications | WB, IHC, IF, ELISA; WB:1:500-1:2000, IHC:1:100-1:300, IF:1:200-1:1000, ELISA:1:5000 |
| Form | Liquid |
| Conjugate | Non-conjugated |
| Storage Buffer | Liquid in PBS containing 50% glycerol, 0.5% BSA and 0.02% sodium azide. |
| Purification Method | The antibody was affinity-purified from rabbit antiserum by affinity-chromatography using epitope-specific immunogen. |
| Isotype | IgG |
| Alias | ETV6; TEL; TEL1; Transcription factor ETV6; ETS translocation variant 6; ETS-related protein Tel1; Tel |
| Immunogen Species | Homo sapiens (Human) |
| Target Names | ETV6 |

Image



Western Blot analysis of Jurkat cells using TEL Polyclonal Antibody

Usage For Research Use Only. Not for use in diagnostic or therapeutic procedures.