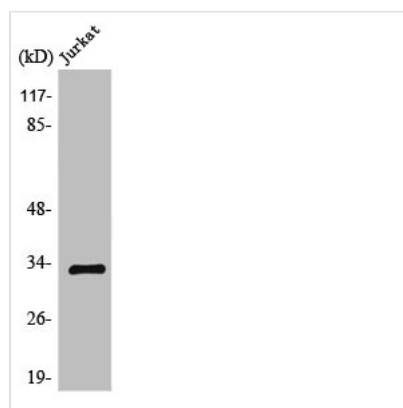




GTF2E2 Antibody

Product Code	CSB-PA004267
Storage	Upon receipt, store at -20°C or -80°C. Avoid repeated freeze.
Uniprot No.	P29084
Immunogen	Synthesized peptide derived from the Internal region of Human TFIIIE-β.
Raised In	Rabbit
Species Reactivity	Human, Mouse
Tested Applications	WB, IHC, ELISA; WB:1:500-1:2000, IHC:1:100-1:300, ELISA:1:20000
Form	Liquid
Conjugate	Non-conjugated
Storage Buffer	Liquid in PBS containing 50% glycerol, 0.5% BSA and 0.02% sodium azide.
Purification Method	The antibody was affinity-purified from rabbit antiserum by affinity-chromatography using epitope-specific immunogen.
Isotype	IgG
Alias	GTF2E2; TF2E2; Transcription initiation factor IIE subunit beta; TFIIIE-beta; General transcription factor IIE subunit 2
Immunogen Species	Homo sapiens (Human)
Target Names	GTF2E2

Image



Western Blot analysis of Jurkat cells using TFIIIE-β Polyclonal Antibody

Usage

For Research Use Only. Not for use in diagnostic or therapeutic procedures.