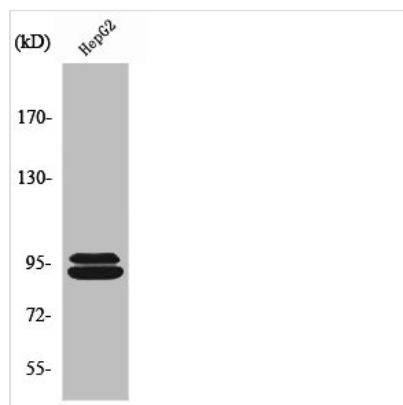




MASTL Antibody

Product Code	CSB-PA004288
Storage	Upon receipt, store at -20°C or -80°C. Avoid repeated freeze.
Uniprot No.	Q96GX5
Immunogen	Synthesized peptide derived from the C-terminal region of Human THC2.
Raised In	Rabbit
Species Reactivity	Human, Mouse
Tested Applications	WB, IHC, ELISA; WB:1:500-1:2000, IHC:1:100-1:300, ELISA:1:20000
Form	Liquid
Conjugate	Non-conjugated
Storage Buffer	Liquid in PBS containing 50% glycerol, 0.5% BSA and 0.02% sodium azide.
Purification Method	The antibody was affinity-purified from rabbit antiserum by affinity-chromatography using epitope-specific immunogen.
Isotype	IgG
Alias	MASTL; GW; GWL; THC2; Serine/threonine-protein kinase greatwall; GW; GWL; hGWL; Microtubule-associated serine/threonine-protein kinase-like; MAST-L
Immunogen Species	Homo sapiens (Human)
Target Names	MASTL

Image



Western Blot analysis of HepG2 cells using THC2 Polyclonal Antibody