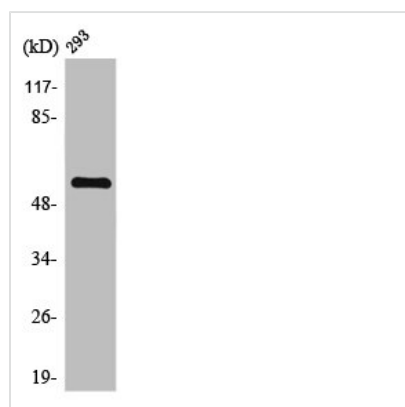




KLF11 Antibody

Product Code	CSB-PA004290
Storage	Upon receipt, store at -20°C or -80°C. Avoid repeated freeze.
Uniprot No.	O14901
Immunogen	Synthesized peptide derived from the N-terminal region of Human TIEG2.
Raised In	Rabbit
Species Reactivity	Human, Mouse
Tested Applications	WB, IHC, IF, ELISA; WB:1:500-1:2000, IHC:1:100-1:300, IF:1:200-1:1000, ELISA:1:20000
Form	Liquid
Conjugate	Non-conjugated
Storage Buffer	Liquid in PBS containing 50% glycerol, 0.5% BSA and 0.02% sodium azide.
Purification Method	The antibody was affinity-purified from rabbit antiserum by affinity-chromatography using epitope-specific immunogen.
Isotype	IgG
Alias	KLF11; FKLF; TIEG2; Krueppel-like factor 11; Transforming growth factor-beta-inducible early growth response protein 2; TGFB-inducible early growth response protein 2; TIEG-2
Immunogen Species	Homo sapiens (Human)
Target Names	KLF11

Image



Western Blot analysis of HuvEc cells using TIEG2 Polyclonal Antibody

Usage For Research Use Only. Not for use in diagnostic or therapeutic procedures.