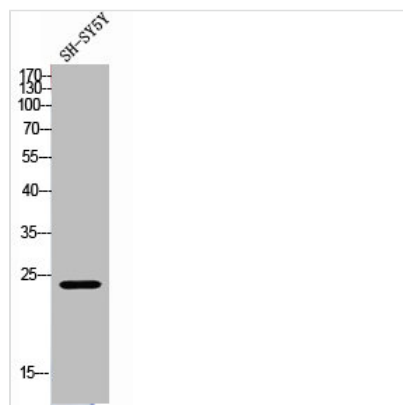




TIMP1 Antibody

Product Code	CSB-PA004293
Storage	Upon receipt, store at -20°C or -80°C. Avoid repeated freeze.
Uniprot No.	P01033
Immunogen	Synthesized peptide derived from the Internal region of Human TIMP-1.
Raised In	Rabbit
Species Reactivity	Human,Mouse,Rat
Tested Applications	WB, ELISA; WB:1:500-1:2000, ELISA:1:10000
Form	Liquid
Conjugate	Non-conjugated
Storage Buffer	Liquid in PBS containing 50% glycerol, 0.5% BSA and 0.02% sodium azide.
Purification Method	The antibody was affinity-purified from rabbit antiserum by affinity-chromatography using epitope-specific immunogen.
Isotype	IgG
Alias	TIMP1; CLGI; TIMP; Metalloproteinase inhibitor 1; Erythroid-potentiating activity; EPA; Fibroblast collagenase inhibitor; Collagenase inhibitor; Tissue inhibitor of metalloproteinases 1; TIMP-1
Immunogen Species	Homo sapiens (Human)
Target Names	TIMP1

Image



Western Blot analysis of SH-SY5Y cells using TIMP-1 Polyclonal Antibody