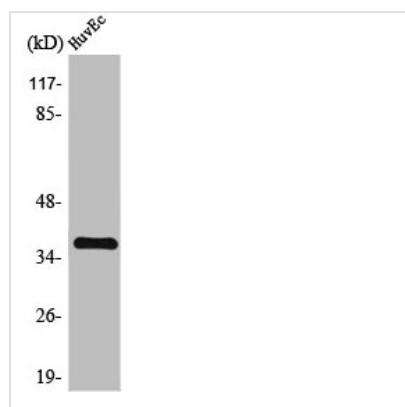




ZFP36L1 Antibody

Product Code	CSB-PA004298
Storage	Upon receipt, store at -20°C or -80°C. Avoid repeated freeze.
Uniprot No.	Q07352
Immunogen	Synthesized peptide derived from Human TIS11B around the non-phosphorylation site of S92.
Raised In	Rabbit
Species Reactivity	Human,Mouse,Rat
Tested Applications	WB, IHC, ELISA; WB:1:500-1:2000, IHC:1:100-1:300, ELISA:1:10000
Form	Liquid
Conjugate	Non-conjugated
Storage Buffer	Liquid in PBS containing 50% glycerol, 0.5% BSA and 0.02% sodium azide.
Purification Method	The antibody was affinity-purified from rabbit antiserum by affinity-chromatography using epitope-specific immunogen.
Isotype	IgG
Alias	ZFP36L1; BERG36; BRF1; ERF1; RNF162B; TIS11B; Zinc finger protein 36; C3H1 type-like 1; Butyrate response factor 1; EGF-response factor 1; ERF-1; Protein TIS11B
Immunogen Species	Homo sapiens (Human)
Target Names	ZFP36L1

Image



Western Blot analysis of MCF7 cells using TIS11B Polyclonal Antibody