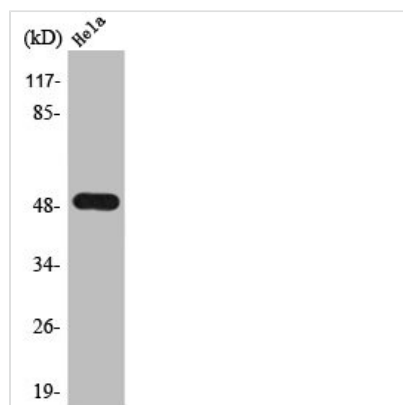




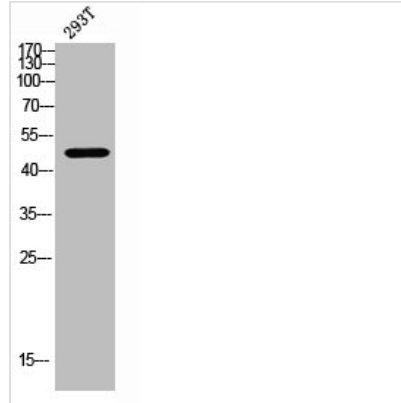
CADM1 Antibody

Product Code	CSB-PA004340
Storage	Upon receipt, store at -20°C or -80°C. Avoid repeated freeze.
Uniprot No.	Q9BY67
Immunogen	Synthesized peptide derived from the C-terminal region of Human TSLC1.
Raised In	Rabbit
Species Reactivity	Human, Mouse
Tested Applications	WB, IF, ELISA; WB:1:500-1:2000, IF:1:200-1:1000, ELISA:1:20000
Form	Liquid
Conjugate	Non-conjugated
Storage Buffer	Liquid in PBS containing 50% glycerol, 0.5% BSA and 0.02% sodium azide.
Purification Method	The antibody was affinity-purified from rabbit antiserum by affinity-chromatography using epitope-specific immunogen.
Isotype	IgG
Alias	CADM1; IGSF4; IGSF4A; NECL2; SYNCAM; TSLC1; Cell adhesion molecule 1; Immunoglobulin superfamily member 4; IgSF4; Nectin-like protein 2; NECL-2; Spermatogenic immunoglobulin superfamily; SgIgSF; Synaptic cell adhesion molecule; SynCAM; Tumo
Immunogen Species	Homo sapiens (Human)
Target Names	CADM1

Image



Western Blot analysis of HeLa cells using TSLC1 Polyclonal Antibody



Western blot analysis of 293T lysis using TSLC1 antibody.