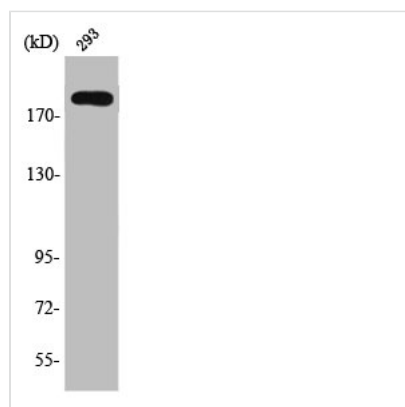




TSC2 Antibody

Product Code	CSB-PA004343
Storage	Upon receipt, store at -20°C or -80°C. Avoid repeated freeze.
Uniprot No.	P49815
Immunogen	Synthesized peptide derived from Human Tuberin around the non-phosphorylation site of S939.
Raised In	Rabbit
Species Reactivity	Human,Mouse,Rat
Tested Applications	WB, IHC, IF, ELISA; WB:1:500-1:2000, IHC:1:100-1:300, IF:1:200-1:1000, ELISA:1:10000
Form	Liquid
Conjugate	Non-conjugated
Storage Buffer	Liquid in PBS containing 50% glycerol, 0.5% BSA and 0.02% sodium azide.
Purification Method	The antibody was affinity-purified from rabbit antiserum by affinity-chromatography using epitope-specific immunogen.
Isotype	IgG
Alias	TSC2; TSC4; Tuberin; Tuberous sclerosis 2 protein
Immunogen Species	Homo sapiens (Human)
Target Names	TSC2

Image



Western Blot analysis of 293 cells using Tuberin Polyclonal Antibody

Usage For Research Use Only. Not for use in diagnostic or therapeutic procedures.