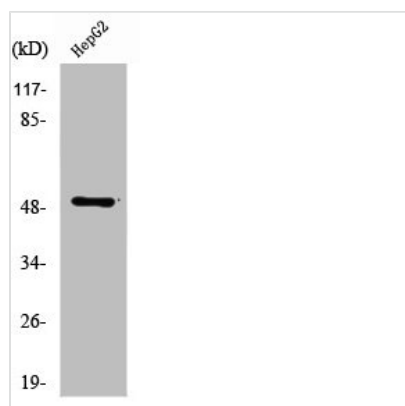




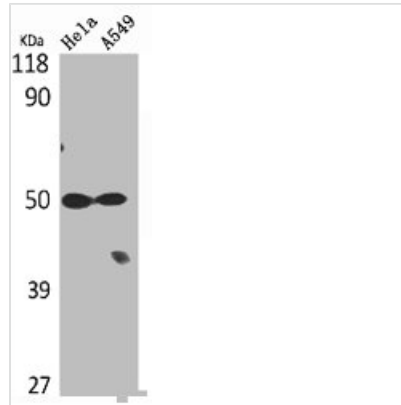
# TUBA1A/TUBA1B Antibody

<b>Product Code</b>	CSB-PA004344
<b>Storage</b>	Upon receipt, store at -20°C or -80°C. Avoid repeated freeze.
<b>Uniprot No.</b>	Q71U36/P68363
<b>Immunogen</b>	Synthesized peptide derived from the C-terminal region of Human Tubulin $\alpha$ .
<b>Raised In</b>	Rabbit
<b>Species Reactivity</b>	Human, Mouse, Rat
<b>Tested Applications</b>	WB, IHC, IF, ELISA; WB:1:500-1:2000, IHC:1:100-1:300, IF:1:200-1:1000, ELISA:1:5000
<b>Form</b>	Liquid
<b>Conjugate</b>	Non-conjugated
<b>Storage Buffer</b>	Liquid in PBS containing 50% glycerol, 0.5% BSA and 0.02% sodium azide.
<b>Purification Method</b>	The antibody was affinity-purified from rabbit antiserum by affinity-chromatography using epitope-specific immunogen.
<b>Isotype</b>	IgG
<b>Alias</b>	TUBA1A; TUBA3; Tubulin alpha-1A chain; Alpha-tubulin 3; Tubulin B-alpha-1; Tubulin alpha-3 chain; TUBA1B; Tubulin alpha-1B chain; Alpha-tubulin ubiquitous; Tubulin K-alpha-1; Tubulin alpha-ubiquitous chain
<b>Immunogen Species</b>	Homo sapiens (Human)
<b>Target Names</b>	TUBA1A/TUBA1B

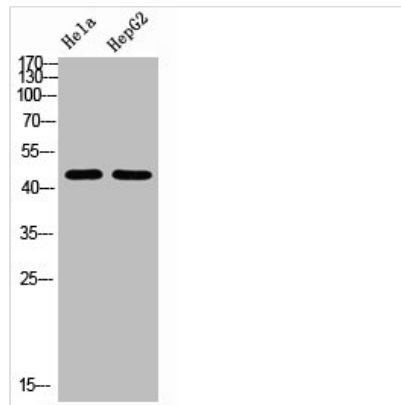
## Image



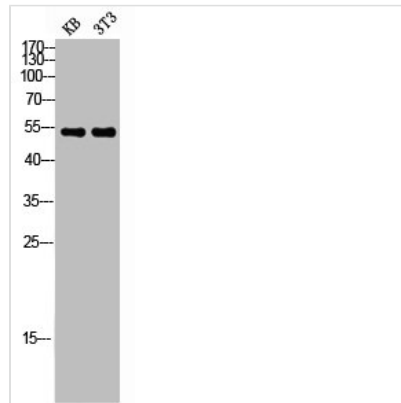
Western Blot analysis of HepG2 cells using Tubulin  $\alpha$  Polyclonal Antibody



Western Blot analysis of HeLa A549 cells using Tubulin  $\alpha$  Polyclonal Antibody



Western Blot analysis of HELA HEPG2 using Tubulin  $\alpha$  Polyclonal Antibody



Western blot analysis of KB 3T3 lysis using Tubulin  $\alpha$  antibody.

## Usage

For Research Use Only. Not for use in diagnostic or therapeutic procedures.