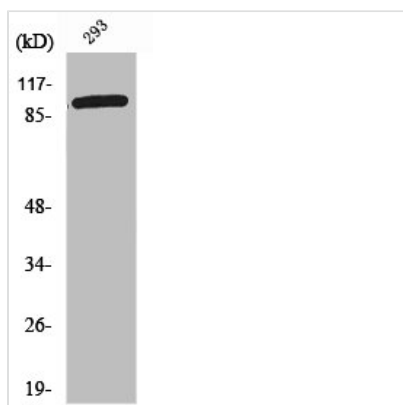




GTF2IRD1 Antibody

Product Code	CSB-PA004483
Storage	Upon receipt, store at -20°C or -80°C. Avoid repeated freeze.
Uniprot No.	Q9UHL9
Immunogen	Synthesized peptide derived from the N-terminal region of Human WBSCR11.
Raised In	Rabbit
Species Reactivity	Human, Mouse, Rat
Tested Applications	WB, IHC, ELISA; WB:1:500-1:2000, IHC:1:100-1:300, ELISA:1:20000
Form	Liquid
Conjugate	Non-conjugated
Storage Buffer	Liquid in PBS containing 50% glycerol, 0.5% BSA and 0.02% sodium azide.
Purification Method	The antibody was affinity-purified from rabbit antiserum by affinity-chromatography using epitope-specific immunogen.
Isotype	IgG
Alias	GTF2IRD1; CREAM1; GTF3; MUSTRD1; RBAP2; WBSCR11; WBSCR12; General transcription factor II-I repeat domain-containing protein 1; GTF2I repeat domain-containing protein 1; General transcription factor III; MusTRD1/BEN; Muscle TFII-I repeat do
Immunogen Species	Homo sapiens (Human)
Target Names	GTF2IRD1

Image



Western Blot analysis of 293 cells using WBSCR11 Polyclonal Antibody

Usage For Research Use Only. Not for use in diagnostic or therapeutic procedures.