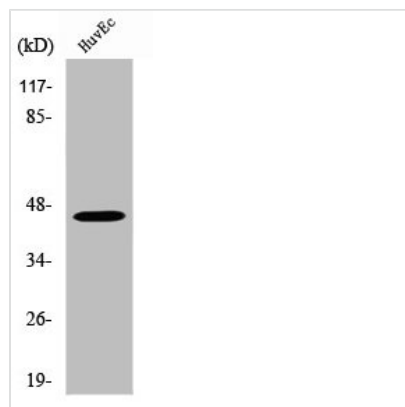




WTAP Antibody

Product Code	CSB-PA004516
Storage	Upon receipt, store at -20°C or -80°C. Avoid repeated freeze.
Uniprot No.	Q15007
Immunogen	Synthesized peptide derived from the C-terminal region of Human WTAP.
Raised In	Rabbit
Species Reactivity	Human,Mouse
Tested Applications	WB, IHC, ELISA; WB:1:500-1:2000, IHC:1:100-1:300, ELISA:1:20000
Form	Liquid
Conjugate	Non-conjugated
Storage Buffer	Liquid in PBS containing 50% glycerol, 0.5% BSA and 0.02% sodium azide.
Purification Method	The antibody was affinity-purified from rabbit antiserum by affinity-chromatography using epitope-specific immunogen.
Isotype	IgG
Alias	WTAP; KIAA0105; Pre-mRNA-splicing regulator WTAP; Female-lethal(2)D homolog; hFL(2)D; WT1-associated protein; Wilms tumor 1-associating protein
Immunogen Species	Homo sapiens (Human)
Target Names	WTAP

Image



Western Blot analysis of HuvEc cells using WTAP Polyclonal Antibody