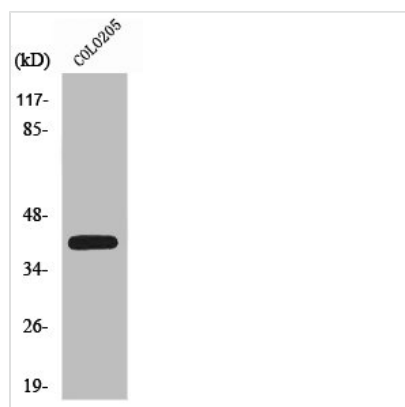




XPA Antibody

Product Code	CSB-PA004520
Storage	Upon receipt, store at -20°C or -80°C. Avoid repeated freeze.
Uniprot No.	P23025
Immunogen	Synthesized peptide derived from the C-terminal region of Human XPA.
Raised In	Rabbit
Species Reactivity	Human, Mouse
Tested Applications	WB, IHC, ELISA; WB:1:500-1:2000, IHC:1:100-1:300, ELISA:1:10000
Form	Liquid
Conjugate	Non-conjugated
Storage Buffer	Liquid in PBS containing 50% glycerol, 0.5% BSA and 0.02% sodium azide.
Purification Method	The antibody was affinity-purified from rabbit antiserum by affinity-chromatography using epitope-specific immunogen.
Isotype	IgG
Alias	XPA; XPAC; DNA repair protein complementing XP-A cells; Xeroderma pigmentosum group A-complementing protein
Immunogen Species	Homo sapiens (Human)
Target Names	XPA

Image



Western Blot analysis of COLO205 cells using XPA Polyclonal Antibody

Usage

For Research Use Only. Not for use in diagnostic or therapeutic procedures.