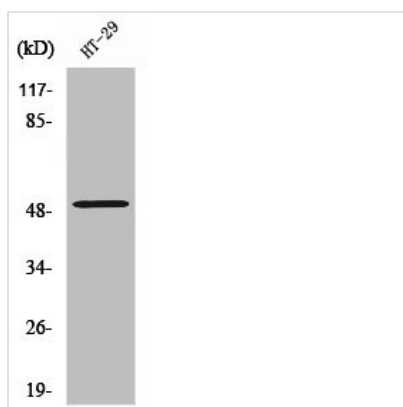




ZFYVE19 Antibody

Product Code	CSB-PA004568
Storage	Upon receipt, store at -20°C or -80°C. Avoid repeated freeze.
Uniprot No.	Q96K21
Immunogen	Synthesized peptide derived from the Internal region of Human ZFYVE19.
Raised In	Rabbit
Species Reactivity	Human
Tested Applications	WB, IHC, ELISA; WB:1:500-1:2000, IHC:1:100-1:300, ELISA:1:40000
Form	Liquid
Conjugate	Non-conjugated
Storage Buffer	Liquid in PBS containing 50% glycerol, 0.5% BSA and 0.02% sodium azide.
Purification Method	The antibody was affinity-purified from rabbit antiserum by affinity-chromatography using epitope-specific immunogen.
Isotype	IgG
Alias	ZFYVE19; MPFYVE; Zinc finger FYVE domain-containing protein 19; MLL partner containing FYVE domain
Immunogen Species	Homo sapiens (Human)
Target Names	ZFYVE19

Image



Western Blot analysis of HT29 cells using ZFYVE19 Polyclonal Antibody

Usage

For Research Use Only. Not for use in diagnostic or therapeutic procedures.