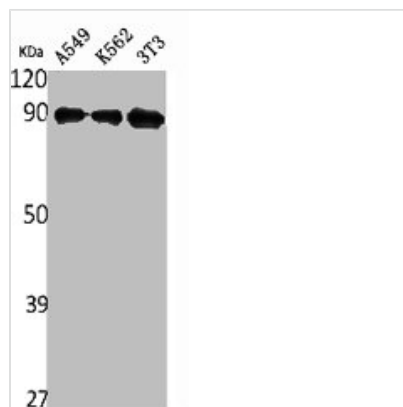




ILF3 Antibody

Product Code	CSB-PA004643
Storage	Upon receipt, store at -20°C or -80°C. Avoid repeated freeze.
Uniprot No.	Q12906
Immunogen	Synthesized peptide derived from the Internal region of Human NF90.
Raised In	Rabbit
Species Reactivity	Human,Mouse,Rat
Tested Applications	WB, ELISA; WB:1:500-1:2000, ELISA:1:20000
Form	Liquid
Conjugate	Non-conjugated
Storage Buffer	Liquid in PBS containing 50% glycerol, 0.5% BSA and 0.02% sodium azide.
Purification Method	The antibody was affinity-purified from rabbit antiserum by affinity-chromatography using epitope-specific immunogen.
Isotype	IgG
Alias	ILF3; DRBF; MPHOSPH4; NF90; Interleukin enhancer-binding factor 3; Double-stranded RNA-binding protein 76; DRBP76; M-phase phosphoprotein 4; MPP4;
Immunogen Species	Homo sapiens (Human)
Target Names	ILF3

Image



Western Blot analysis of A549 K562 NIH-3T3 cells using NF90 Polyclonal Antibody