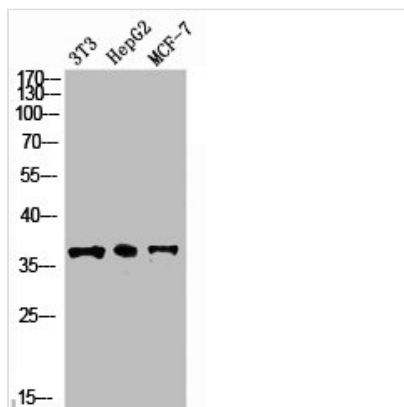




# GAPDH Antibody

<b>Product Code</b>	CSB-PA004666
<b>Storage</b>	Upon receipt, store at -20°C or -80°C. Avoid repeated freeze.
<b>Uniprot No.</b>	P04406
<b>Immunogen</b>	Synthesized peptide derived from the N-terminal region of Human GAPDH.
<b>Raised In</b>	Rabbit
<b>Species Reactivity</b>	Human, Mouse, Rat
<b>Tested Applications</b>	WB, IHC, ELISA; WB:1:500-1:2000, IHC:1:100-1:300, ELISA:1:20000
<b>Form</b>	Liquid
<b>Conjugate</b>	Non-conjugated
<b>Storage Buffer</b>	PBS, pH 7.4, containing 0.5%BSA, 0.02% sodium azide as Preservative and 50% Glycerol.
<b>Purification Method</b>	The antibody was affinity-purified from rabbit antiserum by affinity-chromatography using epitope-specific immunogen.
<b>Isotype</b>	IgG
<b>Alias</b>	GAPDH; GAPD; CDABP0047; OK/SW-cl.12; Glyceraldehyde-3-phosphate dehydrogenase; GAPDH; Peptidyl-cysteine S-nitrosylase GAPDH
<b>Immunogen Species</b>	Homo sapiens (Human)
<b>Target Names</b>	GAPDH

## Image



Western Blot analysis of NIH-3T3 HepG2 MCF7 cells using GAPDH Polyclonal Antibody

## Usage

For Research Use Only. Not for use in diagnostic or therapeutic procedures.