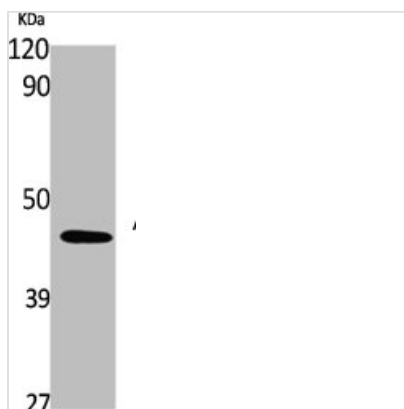




SERPINA1 Antibody

Product Code	CSB-PA004671
Storage	Upon receipt, store at -20°C or -80°C. Avoid repeated freeze.
Uniprot No.	P01009
Immunogen	Synthesized peptide derived from the Internal region of Human AAT.
Raised In	Rabbit
Species Reactivity	Human
Tested Applications	WB, ELISA; WB:1:500-1:2000, ELISA:1:40000
Form	Liquid
Conjugate	Non-conjugated
Storage Buffer	Liquid in PBS containing 50% glycerol, 0.5% BSA and 0.02% sodium azide.
Purification Method	The antibody was affinity-purified from rabbit antiserum by affinity-chromatography using epitope-specific immunogen.
Isotype	IgG
Alias	SERPINA1; AAT; PI; Alpha-1-antitrypsin; Alpha-1 protease inhibitor; Alpha-1-antiproteinase; Serpin A1
Immunogen Species	Homo sapiens (Human)
Target Names	SERPINA1

Image



Western Blot analysis of K562 cells using AAT Polyclonal Antibody

Usage

For Research Use Only. Not for use in diagnostic or therapeutic procedures.