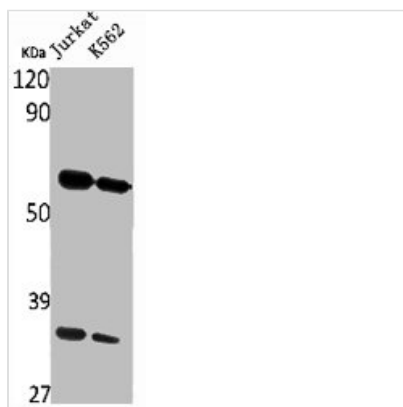




RHCG Antibody

Product Code	CSB-PA004733
Storage	Upon receipt, store at -20°C or -80°C. Avoid repeated freeze.
Uniprot No.	Q9UBD6
Immunogen	Synthesized peptide derived from the Internal region of Human RhCG.
Raised In	Rabbit
Species Reactivity	Human
Tested Applications	WB, ELISA; WB:1:500-1:2000, ELISA:1:40000
Form	Liquid
Conjugate	Non-conjugated
Storage Buffer	Liquid in PBS containing 50% glycerol, 0.5% BSA and 0.02% sodium azide.
Purification Method	The antibody was affinity-purified from rabbit antiserum by affinity-chromatography using epitope-specific immunogen.
Isotype	IgG
Alias	RHCG; C15orf6; CDRC2; PDRC2; RHGK; Ammonium transporter Rh type C; Rh glycoprotein kidney; Rhesus blood group family type C glycoprotein; Rh family type C glycoprotein; Rh type C glycoprotein; Tumor-related protein DRC2
Immunogen Species	Homo sapiens (Human)
Target Names	RHCG

Image



Western Blot analysis of Jurkat K562 cells using RhCG Polyclonal Antibody

Usage For Research Use Only. Not for use in diagnostic or therapeutic procedures.