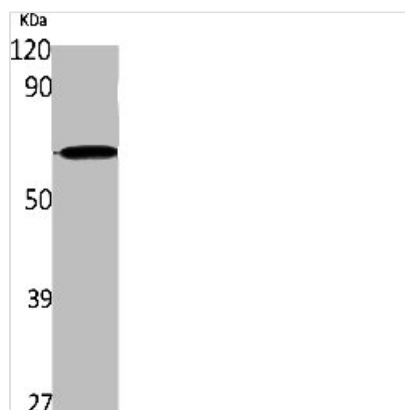




IFNLR1 Antibody

Product Code	CSB-PA004734
Storage	Upon receipt, store at -20°C or -80°C. Avoid repeated freeze.
Uniprot No.	Q8IU57
Immunogen	Synthesized peptide derived from the Internal region of Human IL-28R α .
Raised In	Rabbit
Species Reactivity	Human
Tested Applications	WB, ELISA; WB:1:500-1:2000, ELISA:1:40000
Form	Liquid
Conjugate	Non-conjugated
Storage Buffer	Liquid in PBS containing 50% glycerol, 0.5% BSA and 0.02% sodium azide.
Purification Method	The antibody was affinity-purified from rabbit antiserum by affinity-chromatography using epitope-specific immunogen.
Isotype	IgG
Alias	IL28RA; IFNLR1; LICR2; Interleukin-28 receptor subunit alpha; IL-28 receptor subunit alpha; IL-28R-alpha; IL-28RA; Cytokine receptor class-II member 12; Cytokine receptor family 2 member 12;
Immunogen Species	Homo sapiens (Human)
Target Names	IFNLR1

Image



Western Blot analysis of K562 cells using IL-28R α Polyclonal Antibody

Usage For Research Use Only. Not for use in diagnostic or therapeutic procedures.