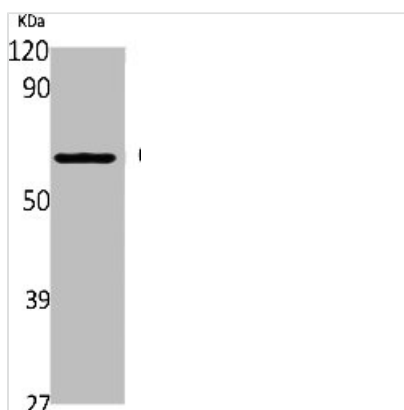




CYP2A6/CYP2A7/CYP2A13 Antibody

Product Code	CSB-PA004739
Storage	Upon receipt, store at -20°C or -80°C. Avoid repeated freeze.
Uniprot No.	P11509/P20853/Q16696
Immunogen	Synthesized peptide derived from the Internal region of Human CYP2A6/7/13.
Raised In	Rabbit
Species Reactivity	Human
Tested Applications	WB, ELISA; WB:1:500-1:2000, ELISA:1:40000
Form	Liquid
Conjugate	Non-conjugated
Storage Buffer	Liquid in PBS containing 50% glycerol, 0.5% BSA and 0.02% sodium azide.
Purification Method	The antibody was affinity-purified from rabbit antiserum by affinity-chromatography using epitope-specific immunogen.
Isotype	IgG
Alias	CYP2A6; CYP2A3; Cytochrome P450 2A6; 1,4-cineole 2-exo-monooxygenase; CYP1IA6; Coumarin 7-hydroxylase; Cytochrome P450 IIA3; Cytochrome P450(I); CYP2A7; Cytochrome P450 2A7; CYP1IA7; Cytochrome P450 IIA4; CYP2A13; Cytochrome P450 2A13; CYP1IA13
Immunogen Species	Homo sapiens (Human)
Target Names	CYP2A6/CYP2A7/CYP2A13

Image



Western Blot analysis of Jurkat cells using CYP2A6/7/13 Polyclonal Antibody

Usage For Research Use Only. Not for use in diagnostic or therapeutic procedures.