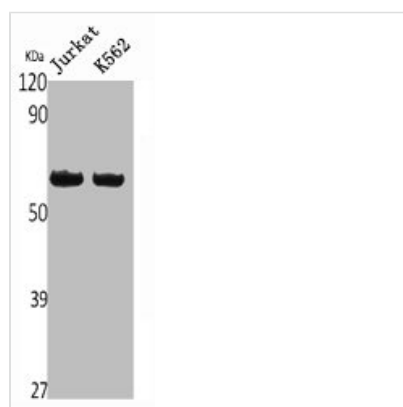




CASP10 Antibody

Product Code	CSB-PA004740
Storage	Upon receipt, store at -20°C or -80°C. Avoid repeated freeze.
Uniprot No.	Q92851
Immunogen	Synthesized peptide derived from the Internal region of Human Caspase-10.
Raised In	Rabbit
Species Reactivity	Human
Tested Applications	WB, ELISA; WB:1:500-1:2000, ELISA:1:40000
Form	Liquid
Conjugate	Non-conjugated
Storage Buffer	Liquid in PBS containing 50% glycerol, 0.5% BSA and 0.02% sodium azide.
Purification Method	The antibody was affinity-purified from rabbit antiserum by affinity-chromatography using epitope-specific immunogen.
Isotype	IgG
Alias	CASP10; MCH4; Caspase-10; CASP-10; Apoptotic protease Mch-4; FAS-associated death domain protein interleukin-1B-converting enzyme 2; FLICE2; ICE-like apoptotic protease 4
Immunogen Species	Homo sapiens (Human)
Target Names	CASP10

Image



Western Blot analysis of Jurkat K562 cells using Caspase-10 Polyclonal Antibody

Usage For Research Use Only. Not for use in diagnostic or therapeutic procedures.