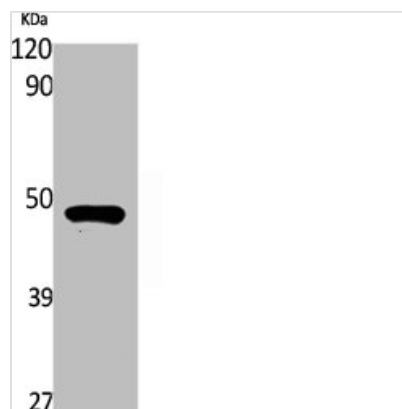




RASSF8 Antibody

Product Code	CSB-PA004748
Storage	Upon receipt, store at -20°C or -80°C. Avoid repeated freeze.
Uniprot No.	Q8NHQ8
Immunogen	Synthesized peptide derived from the Internal region of Human RASSF8.
Raised In	Rabbit
Species Reactivity	Human,Rat
Tested Applications	WB, ELISA; WB:1:500-1:2000, ELISA:1:40000
Form	Liquid
Conjugate	Non-conjugated
Storage Buffer	Liquid in PBS containing 50% glycerol, 0.5% BSA and 0.02% sodium azide.
Purification Method	The antibody was affinity-purified from rabbit antiserum by affinity-chromatography using epitope-specific immunogen.
Isotype	IgG
Alias	RASSF8; C12orf2; Ras association domain-containing protein 8; Carcinoma-associated protein HOJ-1
Immunogen Species	Homo sapiens (Human)
Target Names	RASSF8

Image



Western Blot analysis of rat stomach cells using RASSF8 Polyclonal Antibody

Usage

For Research Use Only. Not for use in diagnostic or therapeutic procedures.