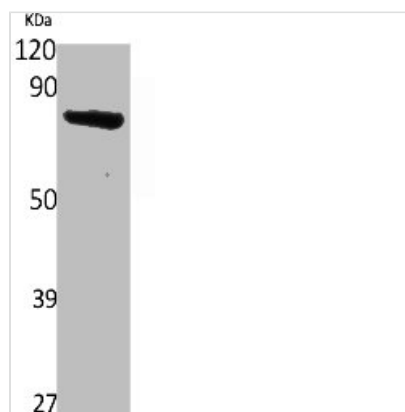




SCML2 Antibody

Product Code	CSB-PA004749
Storage	Upon receipt, store at -20°C or -80°C. Avoid repeated freeze.
Uniprot No.	Q9UQR0
Immunogen	Synthesized peptide derived from the Internal region of Human SCML2.
Raised In	Rabbit
Species Reactivity	Human
Tested Applications	WB, ELISA; WB:1:500-1:2000, ELISA:1:20000
Form	Liquid
Conjugate	Non-conjugated
Storage Buffer	Liquid in PBS containing 50% glycerol, 0.5% BSA and 0.02% sodium azide.
Purification Method	The antibody was affinity-purified from rabbit antiserum by affinity-chromatography using epitope-specific immunogen.
Isotype	IgG
Alias	SCML2; Sex comb on midleg-like protein 2
Immunogen Species	Homo sapiens (Human)
Target Names	SCML2

Image



Western Blot analysis of 293 cells using SCML2 Polyclonal Antibody