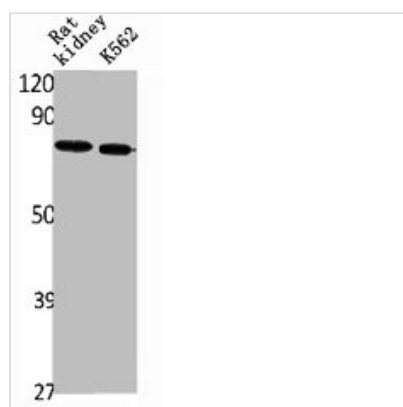




SLC34A2 Antibody

Product Code	CSB-PA004755
Storage	Upon receipt, store at -20°C or -80°C. Avoid repeated freeze.
Uniprot No.	O95436
Immunogen	Synthesized peptide derived from the C-terminal region of Human NPT2b.
Raised In	Rabbit
Species Reactivity	Human,Rat
Tested Applications	WB, ELISA; WB:1:500-1:2000, ELISA:1:20000
Form	Liquid
Conjugate	Non-conjugated
Storage Buffer	Liquid in PBS containing 50% glycerol, 0.5% BSA and 0.02% sodium azide.
Purification Method	The antibody was affinity-purified from rabbit antiserum by affinity-chromatography using epitope-specific immunogen.
Isotype	IgG
Alias	SLC34A2; Sodium-dependent phosphate transport protein 2B; Sodium-phosphate transport protein 2B; Na(+)-dependent phosphate cotransporter 2B; NaPi3b; Sodium/phosphate cotransporter 2B; Na(+)/Pi cotransporter 2B; NaPi-2b; Solute carrier family 34 member 2
Immunogen Species	Homo sapiens (Human)
Target Names	SLC34A2

Image



Western Blot analysis of rat kidney K562 cells using NPT2b Polyclonal Antibody

Usage

For Research Use Only. Not for use in diagnostic or therapeutic procedures.