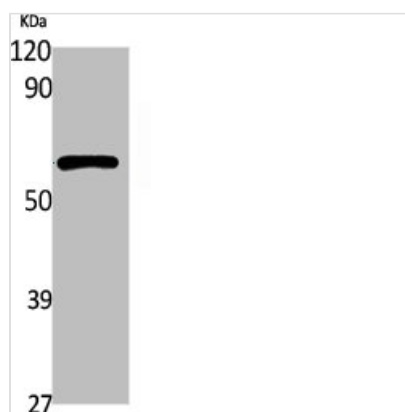




POLM Antibody

Product Code	CSB-PA004757
Storage	Upon receipt, store at -20°C or -80°C. Avoid repeated freeze.
Uniprot No.	Q9NP87
Immunogen	Synthesized peptide derived from the Internal region of Human DNA Pol μ .
Raised In	Rabbit
Species Reactivity	Human
Tested Applications	WB, ELISA; WB:1:500-1:2000, ELISA:1:40000
Form	Liquid
Conjugate	Non-conjugated
Storage Buffer	Liquid in PBS containing 50% glycerol, 0.5% BSA and 0.02% sodium azide.
Purification Method	The antibody was affinity-purified from rabbit antiserum by affinity-chromatography using epitope-specific immunogen.
Isotype	IgG
Alias	POLM; polmu; DNA-directed DNA/RNA polymerase mu; Pol Mu; Terminal transferase
Immunogen Species	Homo sapiens (Human)
Target Names	POLM

Image



Western Blot analysis of K562 cells using DNA Pol μ Polyclonal Antibody