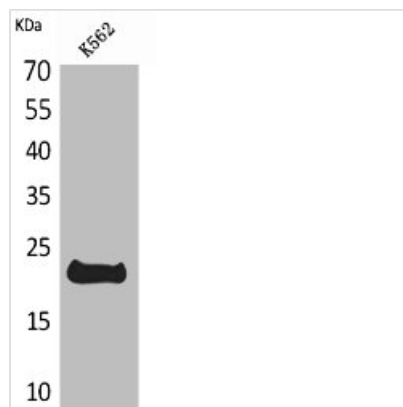




LIF Antibody

Product Code	CSB-PA004761
Storage	Upon receipt, store at -20°C or -80°C. Avoid repeated freeze.
Uniprot No.	P15018
Immunogen	Synthesized peptide derived from the C-terminal region of Human LIF.
Raised In	Rabbit
Species Reactivity	Human
Tested Applications	WB, ELISA; WB:1:500-1:2000, ELISA:1:20000
Form	Liquid
Conjugate	Non-conjugated
Storage Buffer	Liquid in PBS containing 50% glycerol, 0.5% BSA and 0.02% sodium azide.
Purification Method	The antibody was affinity-purified from rabbit antiserum by affinity-chromatography using epitope-specific immunogen.
Isotype	IgG
Alias	LIF; HILDA; Leukemia inhibitory factor; LIF; Differentiation-stimulating factor; D factor; Melanoma-derived LPL inhibitor; MLPLI; Emfilermin
Immunogen Species	Homo sapiens (Human)
Target Names	LIF

Image



Western Blot analysis of K562 cells using LIF Polyclonal Antibody

Usage

For Research Use Only. Not for use in diagnostic or therapeutic procedures.