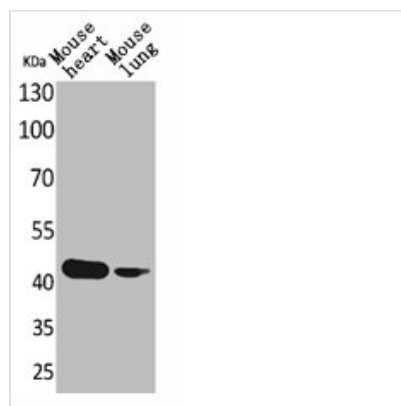




ACTC1 Antibody

Product Code	CSB-PA004766
Storage	Upon receipt, store at -20°C or -80°C. Avoid repeated freeze.
Uniprot No.	P68032
Immunogen	Synthesized peptide derived from the N-terminal region of Human Actin- α cardiac muscle.
Raised In	Rabbit
Species Reactivity	Human, Mouse, Rat
Tested Applications	WB, ELISA; WB:1:500-1:2000, ELISA:1:20000
Form	Liquid
Conjugate	Non-conjugated
Storage Buffer	Liquid in PBS containing 50% glycerol, 0.5% BSA and 0.02% sodium azide.
Purification Method	The antibody was affinity-purified from rabbit antiserum by affinity-chromatography using epitope-specific immunogen.
Isotype	IgG
Alias	ACTC1; ACTC; Actin, alpha cardiac muscle 1; Alpha-cardiac actin
Immunogen Species	Homo sapiens (Human)
Target Names	ACTC1

Image



Western Blot analysis of mouse heart mouse lung cells using Actin- α cardiac muscle Polyclonal Antibody

Usage

For Research Use Only. Not for use in diagnostic or therapeutic procedures.