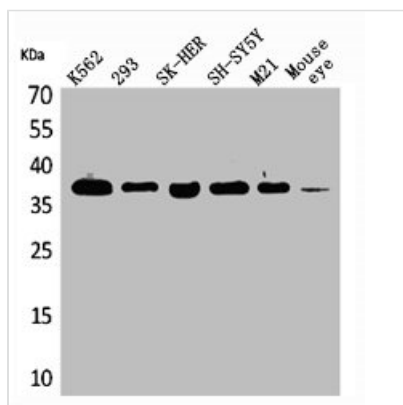




RRP7A Antibody

Product Code	CSB-PA004778
Storage	Upon receipt, store at -20°C or -80°C. Avoid repeated freeze.
Uniprot No.	Q9Y3A4
Immunogen	Synthesized peptide derived from the C-terminal region of Human RRP7A.
Raised In	Rabbit
Species Reactivity	Human,Mouse,Rat
Tested Applications	WB, ELISA; WB:1:500-1:2000, ELISA:1:20000
Form	Liquid
Conjugate	Non-conjugated
Storage Buffer	Liquid in PBS containing 50% glycerol, 0.5% BSA and 0.02% sodium azide.
Purification Method	The antibody was affinity-purified from rabbit antiserum by affinity-chromatography using epitope-specific immunogen.
Isotype	IgG
Alias	RRP7A; CGI-96; Ribosomal RNA-processing protein 7 homolog A; Gastric cancer antigen Zg14; RRP7B; Putative ribosomal RNA-processing protein 7 homolog B; Putative gastric cancer antigen Zg14-like protein
Immunogen Species	Homo sapiens (Human)
Target Names	RRP7A

Image



Western Blot analysis of K562 293 SK-HEP-1 SHSY5Y M21 mouse eye cells using RRP7A Polyclonal Antibody

Usage

For Research Use Only. Not for use in diagnostic or therapeutic procedures.