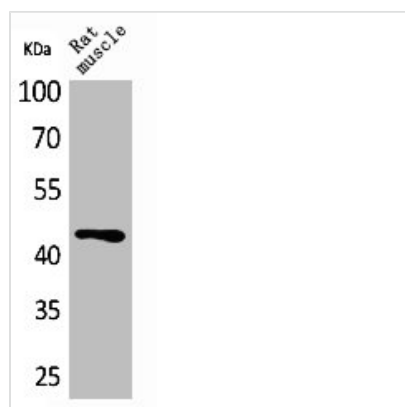




KLF12 Antibody

Product Code	CSB-PA004807
Storage	Upon receipt, store at -20°C or -80°C. Avoid repeated freeze.
Uniprot No.	Q9Y4X4
Immunogen	Synthesized peptide derived from the Internal region of Human KLF12.
Raised In	Rabbit
Species Reactivity	Human, Mouse
Tested Applications	WB, ELISA; WB:1:500-1:2000, ELISA:1:20000
Form	Liquid
Conjugate	Non-conjugated
Storage Buffer	Liquid in PBS containing 50% glycerol, 0.5% BSA and 0.02% sodium azide.
Purification Method	The antibody was affinity-purified from rabbit antiserum by affinity-chromatography using epitope-specific immunogen.
Isotype	IgG
Alias	KLF12; AP2REP; HSPC122; Krueppel-like factor 12; Transcriptional repressor AP-2rep
Immunogen Species	Homo sapiens (Human)
Target Names	KLF12

Image



Western Blot analysis of rat muscle cells using KLF12 Polyclonal Antibody

Usage

For Research Use Only. Not for use in diagnostic or therapeutic procedures.