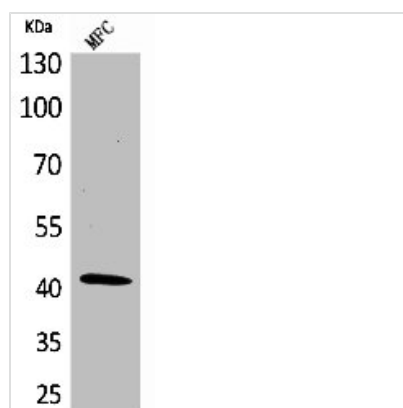




ACTA1 Antibody

Product Code	CSB-PA004813
Storage	Upon receipt, store at -20°C or -80°C. Avoid repeated freeze.
Uniprot No.	P68133
Immunogen	Synthesized peptide derived from the C-terminal region of Human α -SMA.
Raised In	Rabbit
Species Reactivity	Human,Mouse,Rat
Tested Applications	WB, ELISA; WB:1:500-1:2000, ELISA:1:20000
Form	Liquid
Conjugate	Non-conjugated
Storage Buffer	Liquid in PBS containing 50% glycerol, 0.5% BSA and 0.02% sodium azide.
Purification Method	The antibody was affinity-purified from rabbit antiserum by affinity-chromatography using epitope-specific immunogen.
Isotype	IgG
Alias	ACTA1; ACTA; Actin, alpha skeletal muscle; Alpha-actin-1; ACTA2; ACTSA; ACTVS; GIG46; Actin, aortic smooth muscle; Alpha-actin-2; Cell growth-inhibiting gene 46 protein; ACTC1; ACTC; Actin, alpha cardiac muscle 1; Alpha-cardiac actin
Immunogen Species	Homo sapiens (Human)
Target Names	ACTA1

Image



Western Blot analysis of MCF cells using α -SMA Polyclonal Antibody