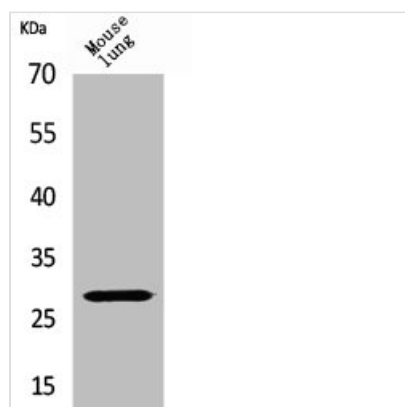




CMA1 Antibody

Product Code	CSB-PA004827
Storage	Upon receipt, store at -20°C or -80°C. Avoid repeated freeze.
Uniprot No.	P23946
Immunogen	Synthesized peptide derived from the Internal region of Human Chymase.
Raised In	Rabbit
Species Reactivity	Human
Tested Applications	WB, ELISA; WB:1:500-1:2000, ELISA:1:20000
Form	Liquid
Conjugate	Non-conjugated
Storage Buffer	Liquid in PBS containing 50% glycerol, 0.5% BSA and 0.02% sodium azide.
Purification Method	The antibody was affinity-purified from rabbit antiserum by affinity-chromatography using epitope-specific immunogen.
Isotype	IgG
Alias	CMA1; CYH; CYM; Chymase; Alpha-chymase; Mast cell protease I
Immunogen Species	Homo sapiens (Human)
Target Names	CMA1

Image



Western Blot analysis of mouse lung cells using Chymase Polyclonal Antibody

Usage

For Research Use Only. Not for use in diagnostic or therapeutic procedures.