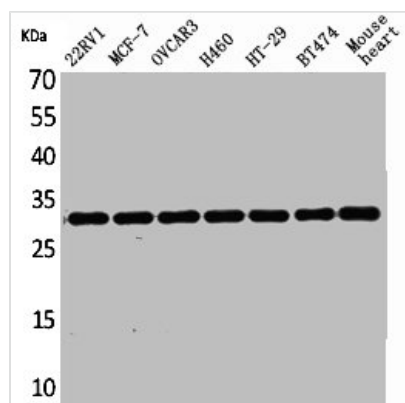




LXN Antibody

Product Code	CSB-PA004864
Storage	Upon receipt, store at -20°C or -80°C. Avoid repeated freeze.
Uniprot No.	Q9BS40
Immunogen	Synthesized peptide derived from the Internal region of Human Latexin.
Raised In	Rabbit
Species Reactivity	Human,Mouse,Rat
Tested Applications	WB, ELISA; WB:1:500-1:2000, ELISA:1:20000
Form	Liquid
Conjugate	Non-conjugated
Storage Buffer	Liquid in PBS containing 50% glycerol, 0.5% BSA and 0.02% sodium azide.
Purification Method	The antibody was affinity-purified from rabbit antiserum by affinity-chromatography using epitope-specific immunogen.
Isotype	IgG
Alias	LXN; Latexin; Endogenous carboxypeptidase inhibitor; ECI; Protein MUM; Tissue carboxypeptidase inhibitor; TCI
Immunogen Species	Homo sapiens (Human)
Target Names	LXN

Image



Western Blot analysis of 22RV-1 MCF7 OVCAR3 H460 HT29 BT474 mouse heart cells using Latexin Polyclonal Antibody

Usage

For Research Use Only. Not for use in diagnostic or therapeutic procedures.