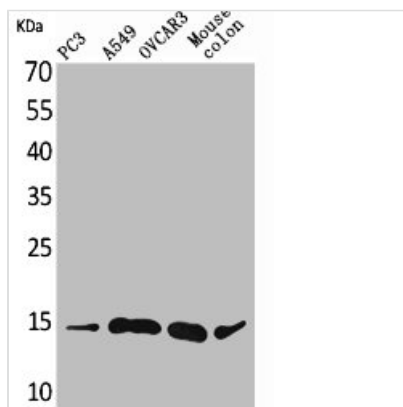




CCL26 Antibody

Product Code	CSB-PA004934
Storage	Upon receipt, store at -20°C or -80°C. Avoid repeated freeze.
Uniprot No.	Q9Y258
Immunogen	Synthesized peptide derived from the Internal region of Human Eotaxin-3.
Raised In	Rabbit
Species Reactivity	Human
Tested Applications	WB, ELISA; WB:1:500-1:2000, ELISA:1:20000
Form	Liquid
Conjugate	Non-conjugated
Storage Buffer	Liquid in PBS containing 50% glycerol, 0.5% BSA and 0.02% sodium azide.
Purification Method	The antibody was affinity-purified from rabbit antiserum by affinity-chromatography using epitope-specific immunogen.
Isotype	IgG
Alias	CCL26; SCYA26; C-C motif chemokine 26; CC chemokine IMAC; Eotaxin-3; Macrophage inflammatory protein 4-alpha; MIP-4-alpha; Small-inducible cytokine A26; Thymic stroma chemokine-1; TSC-1
Immunogen Species	Homo sapiens (Human)
Target Names	CCL26

Image



Western Blot analysis of PC-3 A549 OVCAR3 mouse colon cells using Eotaxin-3 Polyclonal Antibody

Usage

For Research Use Only. Not for use in diagnostic or therapeutic procedures.