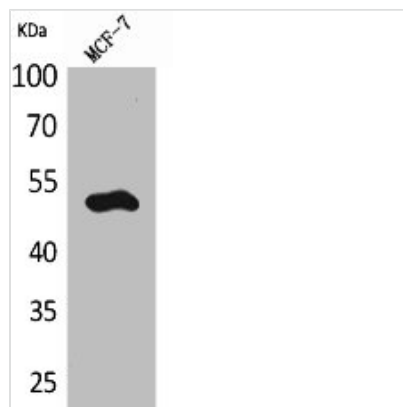




KRT14 Antibody

Product Code	CSB-PA005038
Storage	Upon receipt, store at -20°C or -80°C. Avoid repeated freeze.
Uniprot No.	P02533
Immunogen	Synthesized peptide derived from the C-terminal region of Human Cytokeratin 14.
Raised In	Rabbit
Species Reactivity	Human,Mouse,Rat
Tested Applications	WB, ELISA; WB:1:500-1:2000, ELISA:1:20000
Form	Liquid
Conjugate	Non-conjugated
Storage Buffer	Liquid in PBS containing 50% glycerol, 0.5% BSA and 0.02% sodium azide.
Purification Method	The antibody was affinity-purified from rabbit antiserum by affinity-chromatography using epitope-specific immunogen.
Isotype	IgG
Alias	KRT14; Keratin, type I cytoskeletal 14; Cytokeratin-14; CK-14; Keratin-14; K14
Immunogen Species	Homo sapiens (Human)
Target Names	KRT14

Image



Western Blot analysis of MCF7 cells using Cytokeratin 14 Polyclonal Antibody

Usage

For Research Use Only. Not for use in diagnostic or therapeutic procedures.