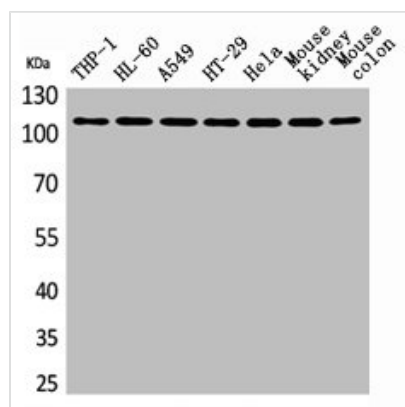




PLA2G4A Antibody

Product Code	CSB-PA005047
Storage	Upon receipt, store at -20°C or -80°C. Avoid repeated freeze.
Uniprot No.	P47712
Immunogen	Synthesized peptide derived from the N-terminal region of Human cPLA2.
Raised In	Rabbit
Species Reactivity	Human, Mouse, Rat
Tested Applications	WB, ELISA; WB:1:500-1:2000, ELISA:1:20000
Form	Liquid
Conjugate	Non-conjugated
Storage Buffer	Liquid in PBS containing 50% glycerol, 0.5% BSA and 0.02% sodium azide.
Purification Method	The antibody was affinity-purified from rabbit antiserum by affinity-chromatography using epitope-specific immunogen.
Isotype	IgG
Alias	PLA2G4A; CPLA2; PLA2G4; Cytosolic phospholipase A2; cPLA2; Phospholipase A2 group IVA
Immunogen Species	Homo sapiens (Human)
Target Names	PLA2G4A

Image



Western Blot analysis of THP-1 H460 A549 HT29 HeLa mouse kidney mouse colon cells using cPLA2 Polyclonal Antibody

Usage

For Research Use Only. Not for use in diagnostic or therapeutic procedures.