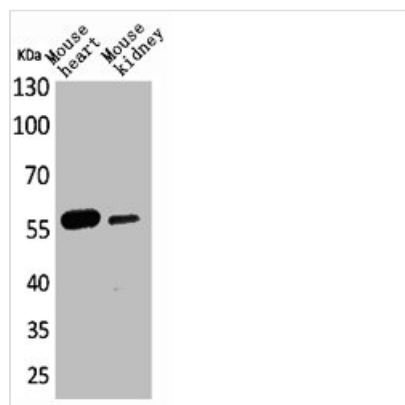




ANGPTL1 Antibody

| | |
|----------------------------|---|
| Product Code | CSB-PA005098 |
| Storage | Upon receipt, store at -20°C or -80°C. Avoid repeated freeze. |
| Uniprot No. | O95841 |
| Immunogen | Synthesized peptide derived from the Internal region of Human Angptl1/2. |
| Raised In | Rabbit |
| Species Reactivity | Human,Mouse,Rat |
| Tested Applications | WB, ELISA; WB:1:500-1:2000, ELISA:1:20000 |
| Form | Liquid |
| Conjugate | Non-conjugated |
| Storage Buffer | Liquid in PBS containing 50% glycerol, 0.5% BSA and 0.02% sodium azide. |
| Purification Method | The antibody was affinity-purified from rabbit antiserum by affinity-chromatography using epitope-specific immunogen. |
| Isotype | IgG |
| Alias | ANGPTL1; ANG3; ANGPT3; ARP1; PSEC0154; Angiopoietin-related protein 1; Angiopoietin-3; ANG-3; Angiopoietin-like protein 1; ANGPTL2; ARP2; Angiopoietin-related protein 2; Angiopoietin-like protein 2 |
| Immunogen Species | Homo sapiens (Human) |
| Target Names | ANGPTL1 |

Image



Western Blot analysis of mouse heart mouse kidney cells using Angptl1/2 Polyclonal Antibody