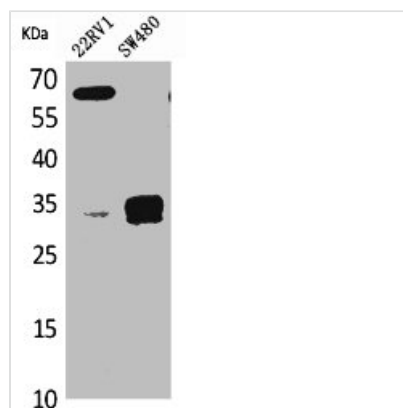




SFTPA2 Antibody

Product Code	CSB-PA005109
Storage	Upon receipt, store at -20°C or -80°C. Avoid repeated freeze.
Uniprot No.	Q8IWL1
Immunogen	Synthesized peptide derived from the Internal region of Human SP-A.
Raised In	Rabbit
Species Reactivity	Human,Mouse,Rat
Tested Applications	WB, ELISA; WB:1:500-1:2000, ELISA:1:20000
Form	Liquid
Conjugate	Non-conjugated
Storage Buffer	Liquid in PBS containing 50% glycerol, 0.5% BSA and 0.02% sodium azide.
Purification Method	The antibody was affinity-purified from rabbit antiserum by affinity-chromatography using epitope-specific immunogen.
Isotype	IgG
Alias	SFTPA2; COLEC5; PSAP; SFTP1; SFTPA; SFTPA2B; Pulmonary surfactant-associated protein A2; PSP-A; PSPA; SP-A; SP-A2; 35 kDa pulmonary surfactant-associated protein; Alveolar proteinosis protein; Collectin-5; SFTPA1; COLEC4; PSAP;
Immunogen Species	Homo sapiens (Human)
Target Names	SFTPA2

Image



Western Blot analysis of K562 mouse lung cells using SP-A Polyclonal Antibody