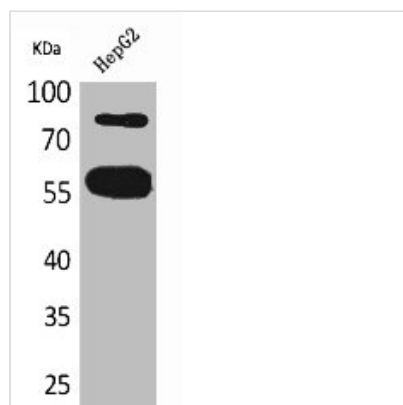




CEACAM1 Antibody

| | |
|----------------------------|--|
| Product Code | CSB-PA005134 |
| Storage | Upon receipt, store at -20°C or -80°C. Avoid repeated freeze. |
| Uniprot No. | P13688 |
| Immunogen | Synthesized peptide derived from the N-terminal region of Human CEACAM1/5. |
| Raised In | Rabbit |
| Species Reactivity | Human |
| Tested Applications | WB, ELISA; WB:1:500-1:2000, ELISA:1:20000 |
| Form | Liquid |
| Conjugate | Non-conjugated |
| Storage Buffer | Liquid in PBS containing 50% glycerol, 0.5% BSA and 0.02% sodium azide. |
| Purification Method | The antibody was affinity-purified from rabbit antiserum by affinity-chromatography using epitope-specific immunogen. |
| Isotype | IgG |
| Alias | CEACAM1; BGP; BGP1; Carcinoembryonic antigen-related cell adhesion molecule 1; Biliary glycoprotein 1; BGP-1; CD66a; CEACAM5; CEA; Carcinoembryonic antigen-related cell adhesion molecule 5; Carcinoembryonic antigen; CEA; Meconium antigen 100; CD66e |
| Immunogen Species | Homo sapiens (Human) |
| Target Names | CEACAM1 |

Image



Western Blot analysis of HepG2 cells using CEACAM1/5 Polyclonal Antibody