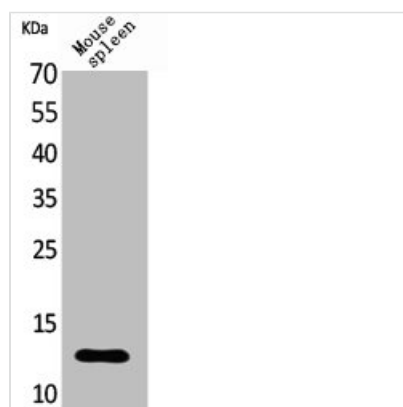




CXCL13 Antibody

Product Code	CSB-PA005137
Storage	Upon receipt, store at -20°C or -80°C. Avoid repeated freeze.
Uniprot No.	O43927
Immunogen	Synthesized peptide derived from the Internal region of Human BLC.
Raised In	Rabbit
Species Reactivity	Human
Tested Applications	WB, ELISA; WB:1:500-1:2000, ELISA:1:20000
Form	Liquid
Conjugate	Non-conjugated
Storage Buffer	Liquid in PBS containing 50% glycerol, 0.5% BSA and 0.02% sodium azide.
Purification Method	The antibody was affinity-purified from rabbit antiserum by affinity-chromatography using epitope-specific immunogen.
Isotype	IgG
Alias	CXCL13; BCA1; BLC; SCYB13; C-X-C motif chemokine 13; Angie; B cell-attracting chemokine 1; BCA-1; B lymphocyte chemoattractant; CXC chemokine BLC; Small-inducible cytokine B13
Immunogen Species	Homo sapiens (Human)
Target Names	CXCL13

Image



Western Blot analysis of mouse spleen cells using BLC Polyclonal Antibody

Usage For Research Use Only. Not for use in diagnostic or therapeutic procedures.