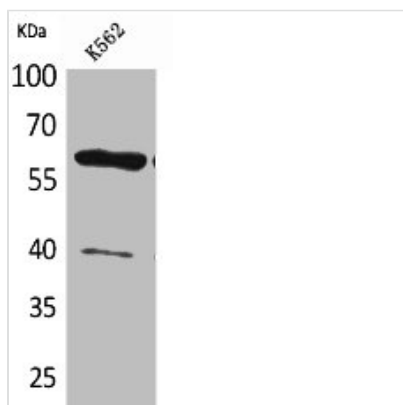




CYP11A1 Antibody

Product Code	CSB-PA005154
Storage	Upon receipt, store at -20°C or -80°C. Avoid repeated freeze.
Uniprot No.	P05108
Immunogen	Synthesized peptide derived from the C-terminal region of Human CYP11A1.
Raised In	Rabbit
Species Reactivity	Human
Tested Applications	WB, ELISA; WB:1:500-1:2000, ELISA:1:20000
Form	Liquid
Conjugate	Non-conjugated
Storage Buffer	Liquid in PBS containing 50% glycerol, 0.5% BSA and 0.02% sodium azide.
Purification Method	The antibody was affinity-purified from rabbit antiserum by affinity-chromatography using epitope-specific immunogen.
Isotype	IgG
Alias	CYP11A1; CYP11A; Cholesterol side-chain cleavage enzyme, mitochondrial; CYPXIA1; Cholesterol desmolase; Cytochrome P450 11A1; Cytochrome P450(scc)
Immunogen Species	Homo sapiens (Human)
Target Names	CYP11A1

Image



Western Blot analysis of K562 cells using CYP11A1 Polyclonal Antibody

Usage For Research Use Only. Not for use in diagnostic or therapeutic procedures.