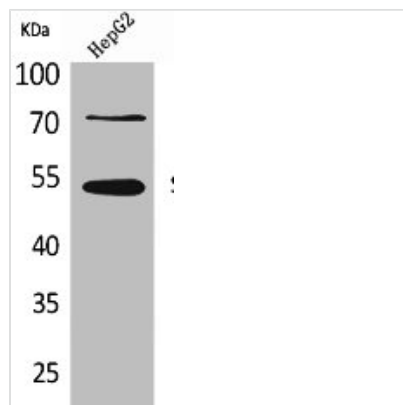




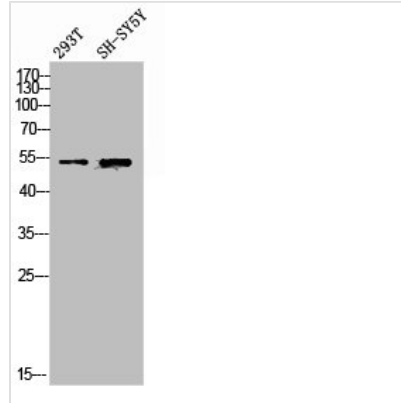
# SPTLC1 Antibody

|                            |   |
|----------------------------|---|
| <b>Product Code</b>        | CSB-PA005177  |
| <b>Storage</b>             | Upon receipt, store at -20°C or -80°C. Avoid repeated freeze.   |
| <b>Uniprot No.</b>         | O15269  |
| <b>Immunogen</b>           | Synthesized peptide derived from the C-terminal region of Human SPTLC1.   |
| <b>Raised In</b>           | Rabbit  |
| <b>Species Reactivity</b>  | Human,Mouse,Rat   |
| <b>Tested Applications</b> | WB, ELISA; WB:1:500-1:2000, ELISA:1:20000   |
| <b>Form</b>                | Liquid  |
| <b>Conjugate</b>           | Non-conjugated  |
| <b>Storage Buffer</b>      | Liquid in PBS containing 50% glycerol, 0.5% BSA and 0.02% sodium azide.   |
| <b>Purification Method</b> | The antibody was affinity-purified from rabbit antiserum by affinity-chromatography using epitope-specific immunogen.                       |
| <b>Isotype</b>             | IgG   |
| <b>Alias</b>               | SPTLC1; LCB1; Serine palmitoyltransferase 1; Long chain base biosynthesis protein 1; LCB 1; Serine-palmitoyl-CoA transferase 1; SPT 1; SPT1 |
| <b>Immunogen Species</b>   | Homo sapiens (Human)  |
| <b>Target Names</b>        | SPTLC1  |

## Image



Western Blot analysis of HepG2 cells using SPTLC1 Polyclonal Antibody



Western blot analysis of 293T SH-SY5Y lysis using SPTLC1 antibody.

**Usage**

For Research Use Only. Not for use in diagnostic or therapeutic procedures.