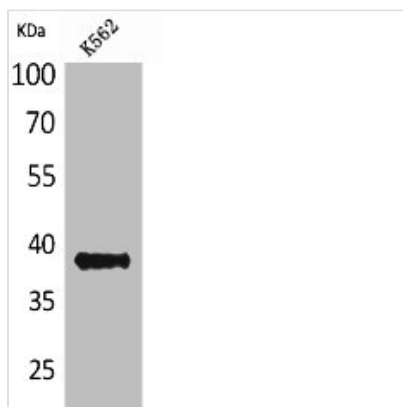




CD1C Antibody

Product Code	CSB-PA005190
Storage	Upon receipt, store at -20°C or -80°C. Avoid repeated freeze.
Uniprot No.	P29017
Immunogen	Synthesized peptide derived from the Internal region of Human CD1C.
Raised In	Rabbit
Species Reactivity	Human
Tested Applications	WB, ELISA; WB:1:500-1:2000, ELISA:1:20000
Form	Liquid
Conjugate	Non-conjugated
Storage Buffer	Liquid in PBS containing 50% glycerol, 0.5% BSA and 0.02% sodium azide.
Purification Method	The antibody was affinity-purified from rabbit antiserum by affinity-chromatography using epitope-specific immunogen.
Isotype	IgG
Alias	CD1C; T-cell surface glycoprotein CD1c; CD1c
Immunogen Species	Homo sapiens (Human)
Target Names	CD1C

Image



Western Blot analysis of K562 cells using CD1C Polyclonal Antibody

Usage

For Research Use Only. Not for use in diagnostic or therapeutic procedures.