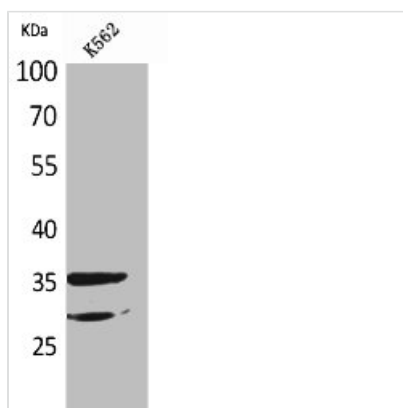




IL2RA Antibody

| | |
|----------------------------|--|
| Product Code | CSB-PA005198 |
| Storage | Upon receipt, store at -20°C or -80°C. Avoid repeated freeze. |
| Uniprot No. | P01589 |
| Immunogen | Synthesized peptide derived from the Internal region of Human IL-2R α . |
| Raised In | Rabbit |
| Species Reactivity | Human |
| Tested Applications | WB, ELISA; WB:1:500-1:2000, ELISA:1:20000 |
| Form | Liquid |
| Conjugate | Non-conjugated |
| Storage Buffer | Liquid in PBS containing 50% glycerol, 0.5% BSA and 0.02% sodium azide. |
| Purification Method | The antibody was affinity-purified from rabbit antiserum by affinity-chromatography using epitope-specific immunogen. |
| Isotype | IgG |
| Alias | IL2RA; Interleukin-2 receptor subunit alpha; IL-2 receptor subunit alpha; IL-2-RA; IL-2R subunit alpha; IL2-RA; TAC antigen; p55; CD25 |
| Immunogen Species | Homo sapiens (Human) |
| Target Names | IL2RA |

Image



Western Blot analysis of K562 cells using IL-2R α Polyclonal Antibody

Usage

For Research Use Only. Not for use in diagnostic or therapeutic procedures.