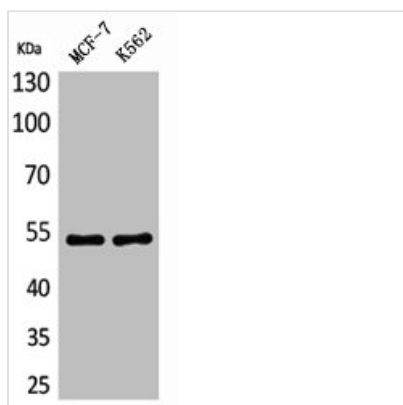




LILRA2 Antibody

Product Code	CSB-PA005236
Storage	Upon receipt, store at -20°C or -80°C. Avoid repeated freeze.
Uniprot No.	Q8N149
Immunogen	Synthesized peptide derived from the Internal region of Human CD85e/h.
Raised In	Rabbit
Species Reactivity	Human
Tested Applications	WB, ELISA; WB:1:500-1:2000, ELISA:1:20000
Form	Liquid
Conjugate	Non-conjugated
Storage Buffer	Liquid in PBS containing 50% glycerol, 0.5% BSA and 0.02% sodium azide.
Purification Method	The antibody was affinity-purified from rabbit antiserum by affinity-chromatography using epitope-specific immunogen.
Isotype	IgG
Alias	LILRA2; ILT1; LIR7; Leukocyte immunoglobulin-like receptor subfamily A member 2; CD85 antigen-like family member H; Immunoglobulin-like transcript 1; ILT-1; Leukocyte immunoglobulin-like receptor 7; LIR-7; CD85h; LILRA3; ILT6; LIR4;
Immunogen Species	Homo sapiens (Human)
Target Names	LILRA2

Image



Western Blot analysis of MCF7 K562 cells using CD85e/h Polyclonal Antibody

Usage

For Research Use Only. Not for use in diagnostic or therapeutic procedures.