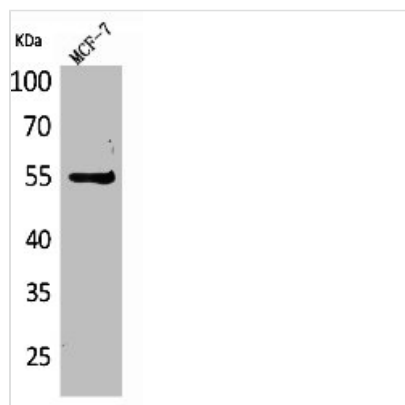




LILRA4 Antibody

| | |
|----------------------------|--|
| Product Code | CSB-PA005237 |
| Storage | Upon receipt, store at -20°C or -80°C. Avoid repeated freeze. |
| Uniprot No. | P59901 |
| Immunogen | Synthesized peptide derived from the Internal region of Human CD85g. |
| Raised In | Rabbit |
| Species Reactivity | Human |
| Tested Applications | WB, ELISA; WB:1:500-1:2000, ELISA:1:20000 |
| Form | Liquid |
| Conjugate | Non-conjugated |
| Storage Buffer | Liquid in PBS containing 50% glycerol, 0.5% BSA and 0.02% sodium azide. |
| Purification Method | The antibody was affinity-purified from rabbit antiserum by affinity-chromatography using epitope-specific immunogen. |
| Isotype | IgG |
| Alias | LILRA4; ILT7; Leukocyte immunoglobulin-like receptor subfamily A member 4; CD85 antigen-like family member G; Immunoglobulin-like transcript 7; ILT-7; CD85g |
| Immunogen Species | Homo sapiens (Human) |
| Target Names | LILRA4 |

Image



Western Blot analysis of MCF7 cells using CD85g Polyclonal Antibody

Usage

For Research Use Only. Not for use in diagnostic or therapeutic procedures.