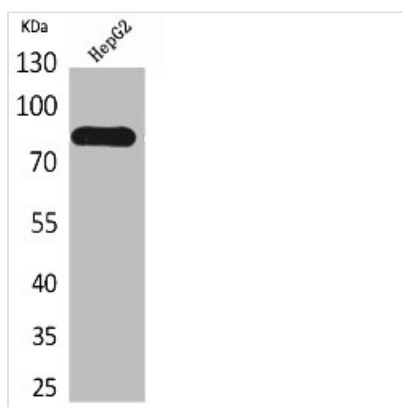




CD248 Antibody

Product Code	CSB-PA005262
Storage	Upon receipt, store at -20°C or -80°C. Avoid repeated freeze.
Uniprot No.	Q9HCU0
Immunogen	Synthesized peptide derived from the Internal region of Human CD248.
Raised In	Rabbit
Species Reactivity	Human
Tested Applications	WB, ELISA; WB:1:500-1:2000, ELISA:1:20000
Form	Liquid
Conjugate	Non-conjugated
Storage Buffer	Liquid in PBS containing 50% glycerol, 0.5% BSA and 0.02% sodium azide.
Purification Method	The antibody was affinity-purified from rabbit antiserum by affinity-chromatography using epitope-specific immunogen.
Isotype	IgG
Alias	CD248; CD164L1; TEM1; Endosialin; Tumor endothelial marker 1; CD248
Immunogen Species	Homo sapiens (Human)
Target Names	CD248

Image



Western Blot analysis of HepG2 cells using CD248 Polyclonal Antibody

Usage

For Research Use Only. Not for use in diagnostic or therapeutic procedures.