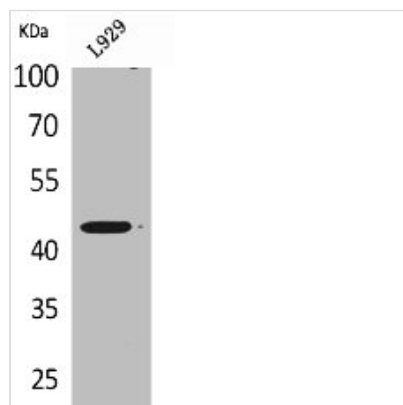




SIGLEC5 Antibody

Product Code	CSB-PA005284
Storage	Upon receipt, store at -20°C or -80°C. Avoid repeated freeze.
Uniprot No.	O15389
Immunogen	Synthesized peptide derived from the Internal region of Human Siglec-5/14.
Raised In	Rabbit
Species Reactivity	Human
Tested Applications	WB, ELISA; WB:1:500-1:2000, ELISA:1:20000
Form	Liquid
Conjugate	Non-conjugated
Storage Buffer	Liquid in PBS containing 50% glycerol, 0.5% BSA and 0.02% sodium azide.
Purification Method	The antibody was affinity-purified from rabbit antiserum by affinity-chromatography using epitope-specific immunogen.
Isotype	IgG
Alias	SIGLEC5; CD33L2; OBBP2; Sialic acid-binding Ig-like lectin 5; Siglec-5; CD33 antigen-like 2; Obesity-binding protein 2; OB-BP2; OB-binding protein 2; CD170; SIGLEC14; Sialic acid-binding Ig-like lectin 14; Siglec-14
Immunogen Species	Homo sapiens (Human)
Target Names	SIGLEC5

Image



Western Blot analysis of L929 cells using Siglec-5/14 Polyclonal Antibody

Usage For Research Use Only. Not for use in diagnostic or therapeutic procedures.