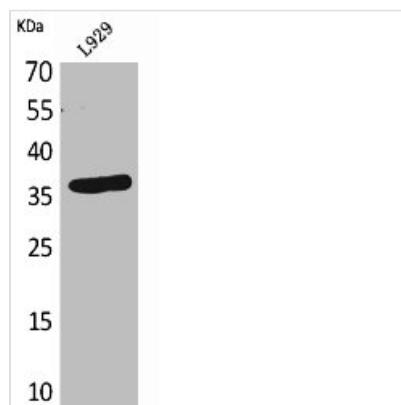




CD300LG Antibody

Product Code	CSB-PA005286
Storage	Upon receipt, store at -20°C or -80°C. Avoid repeated freeze.
Uniprot No.	Q6UXG3
Immunogen	Synthesized peptide derived from the Internal region of Human CD300g.
Raised In	Rabbit
Species Reactivity	Human
Tested Applications	WB, ELISA; WB:1:500-1:2000, ELISA:1:20000
Form	Liquid
Conjugate	Non-conjugated
Storage Buffer	Liquid in PBS containing 50% glycerol, 0.5% BSA and 0.02% sodium azide.
Purification Method	The antibody was affinity-purified from rabbit antiserum by affinity-chromatography using epitope-specific immunogen.
Isotype	IgG
Alias	CD300LG; CLM9; TREM4; CMRF35-like molecule 9; CLM-9; CD300 antigen-like family member G; Triggering receptor expressed on myeloid cells 4; TREM-4; CD300g
Immunogen Species	Homo sapiens (Human)
Target Names	CD300LG

Image



Western Blot analysis of L929 cells using CD300g Polyclonal Antibody

Usage For Research Use Only. Not for use in diagnostic or therapeutic procedures.